



SAMPLE HOUSE PLANS FOR 522 WALNUT STREET IN DOWNTOWN DAVIDSON

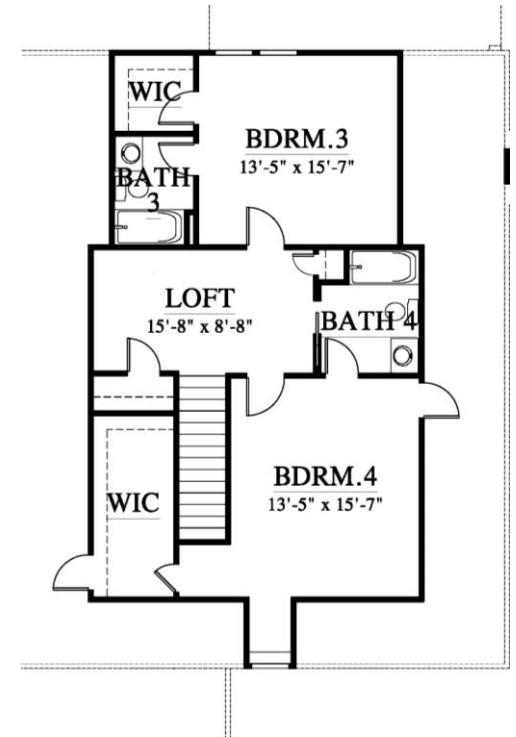
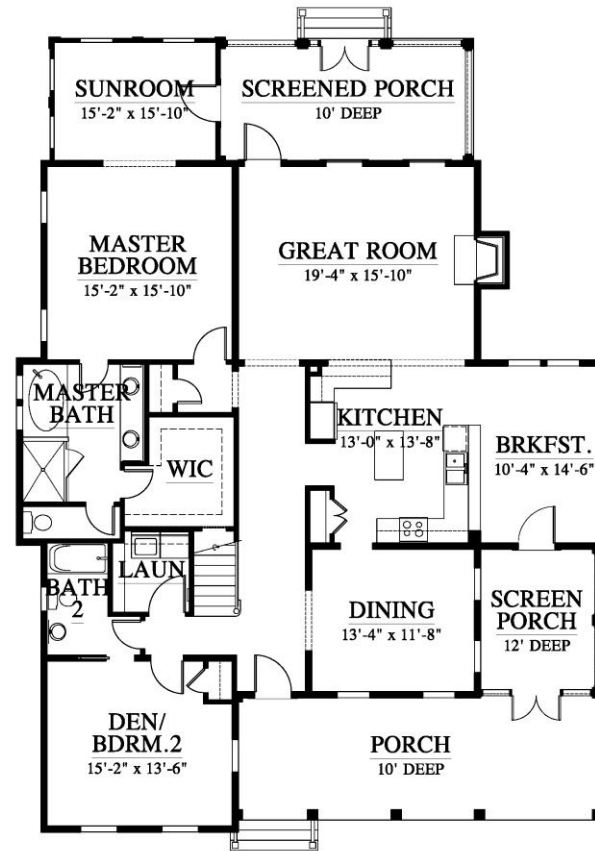
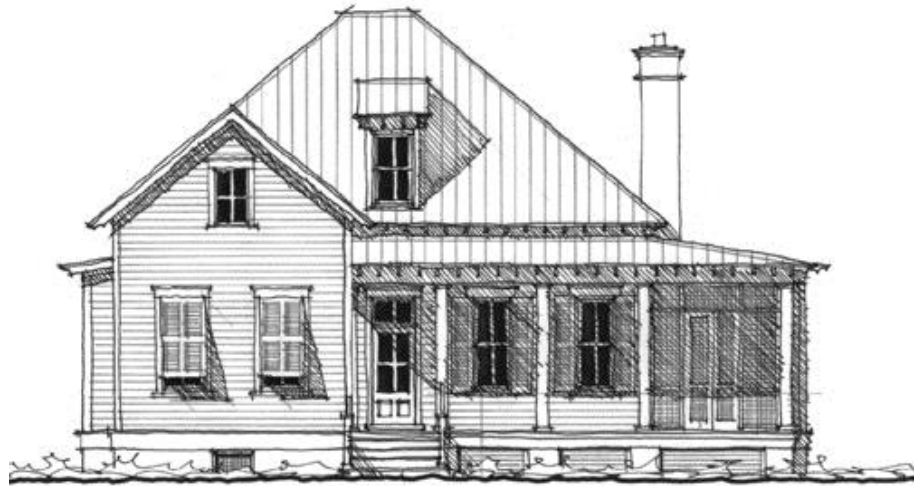
The following are just a few of many house plans that can be built on this lot. We can also engage an architect to design a custom home plan just for you!

Please note that the lot must have a detached garage, and you are permitted to build finished space above the garage.

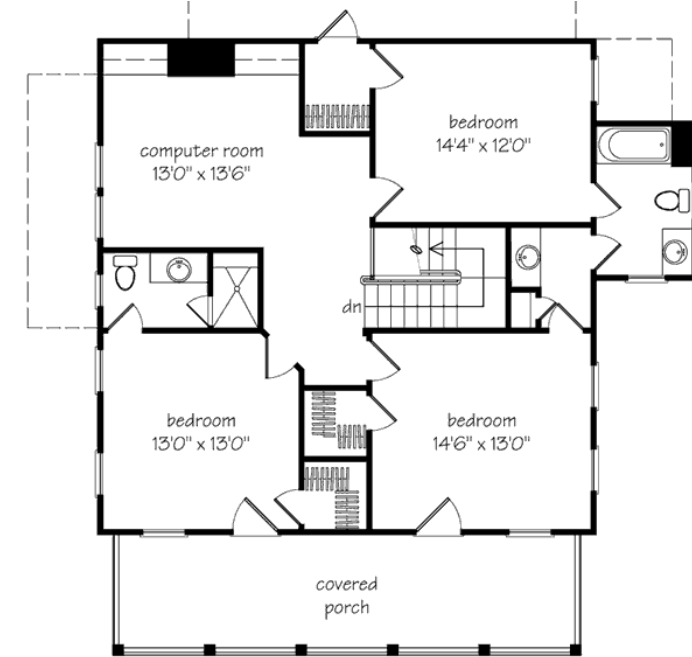
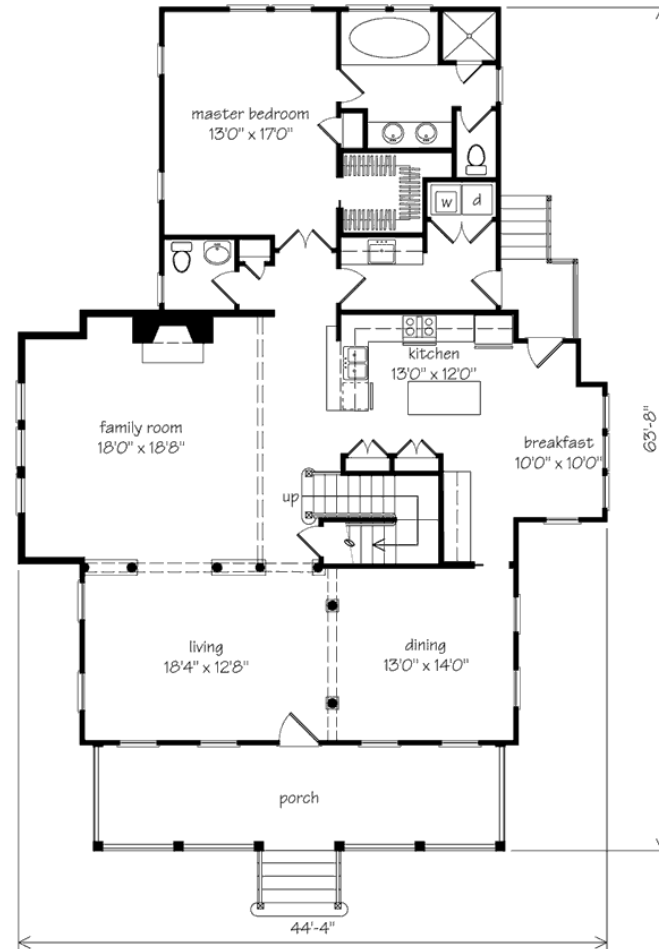
A partially inground basement is also an option, and portions of the basement may be finished. A basement would require alteration to the first floor plan to allow for stairs to the basement.



“The Mises” by Allison Ramsey Architects. 3,000 heated square feet with ample porches. Main level master suite with a total of 4 bedrooms and 3 bathrooms. Most guest bedrooms are on the main level.



“The Hartsville” by Allison Ramsey Architects. 2,893 heated square feet with ample porches. Main level master suite with a total of 4 bedrooms and 3 bathrooms.



“The Mayesville” by Moser Design Group. 2,849 heated square feet with ample porches. Main level master suite with a total of 4 bedrooms and 3.5 bathrooms. Striking double front porch.

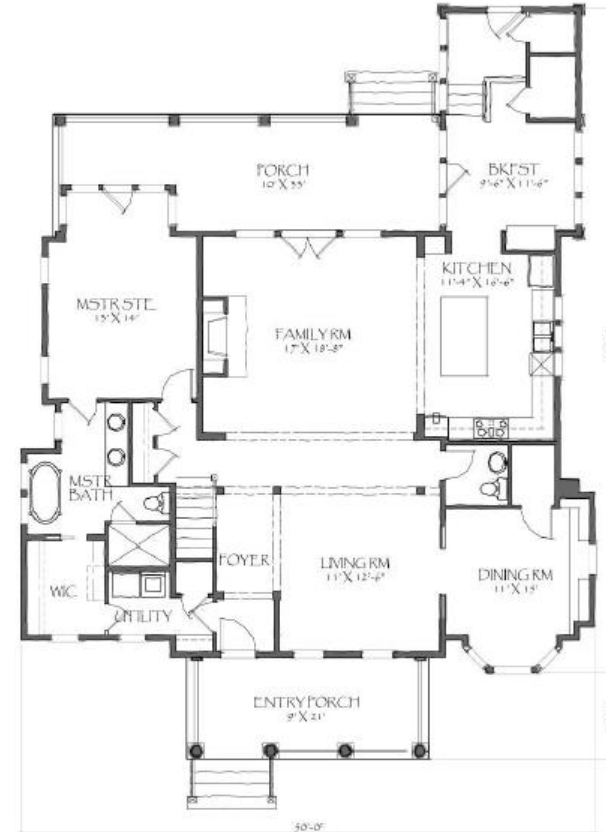
“Plan M-16A” by Moser Design Group.

3,000 total heated square feet with ample porches. 4 bedrooms with a main level master suite, and 3.5 bathrooms. We would probably build this home with a single level front porch, although a double stacked front porch is an option.



SECOND FLOOR PLAN

Significant modifications may be required if building within a 50 mile radius of Beaufort, SC. This is an artist's rendering. The final set of construction documents may vary or have been updated from this conceptual design. Please contact MDG1, if you have any questions.



FIRST FLOOR PLAN

2007 MOSER DESIGN GROUP, INC. ©

4 BR/ 3.5 BA
DOWNSTAIRS MASTER SUITE

2,007 HTD. SQFT 1ST FLR
993 HTD. SQFT 2ND FLR
3,000 TOTAL HEATED SQFT.

